

PRACTICE WORKSHEET**Lesson 8-1 - Geometric Mean**

Simplify each radical.

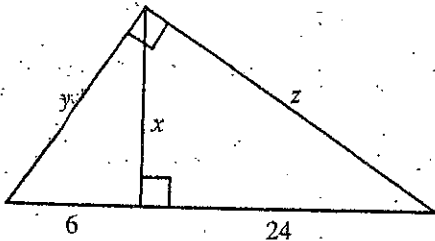
1. $\sqrt{144} =$ _____ 2. $\sqrt{50} =$ _____ 3. $\sqrt{\frac{81}{100}} =$ _____ 4. $\frac{\sqrt{3}}{\sqrt{7}} =$ _____
5. $\sqrt{\frac{49}{12}} =$ _____ 6. $\frac{5}{\sqrt{5}} =$ _____ 7. $\frac{3}{\sqrt{121}} =$ _____ 8. $\frac{6}{\sqrt{7}} =$ _____

Find the geometric mean of each pair of numbers.

9. 7 and 9 _____ 10. 14 and 14 _____ 11. $2\sqrt{3}$ and $\sqrt{3}$ _____

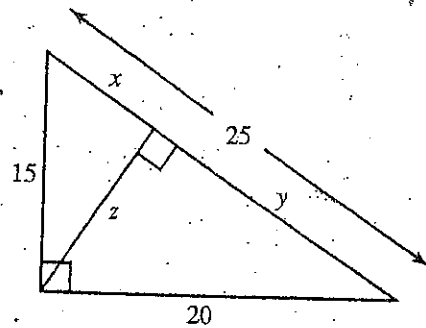
Find the indicated length.

12.



$$x = \text{_____} \quad y = \text{_____} \quad z = \text{_____}$$

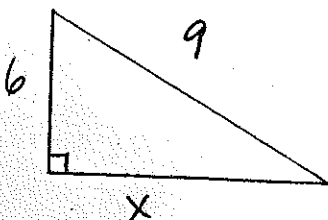
13.



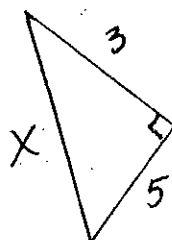
$$x = \text{_____} \quad y = \text{_____} \quad z = \text{_____}$$

Find x

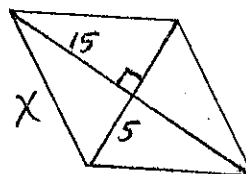
14.



15.



16.

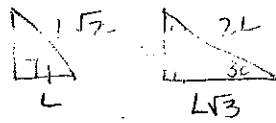


17. Does 3, 4, 5 form a right Δ ?

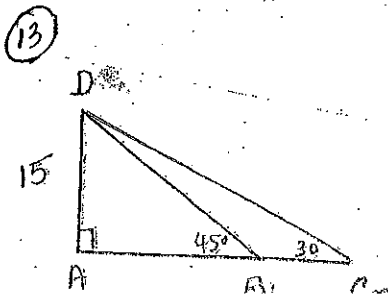
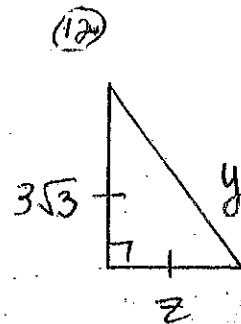
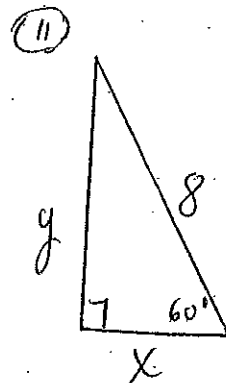
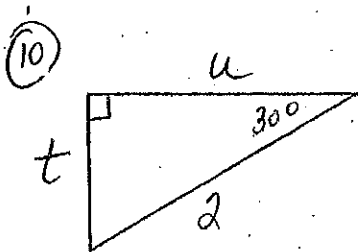
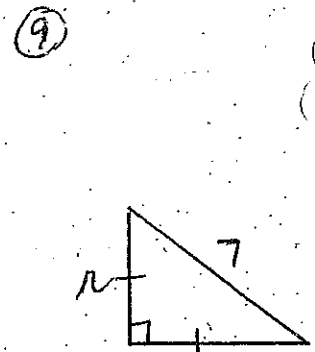
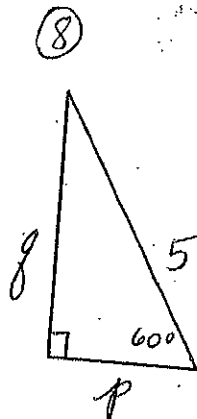
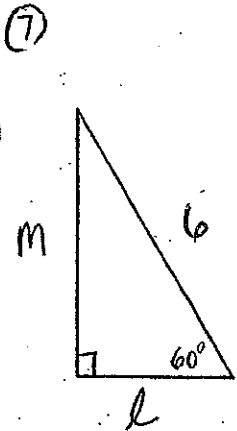
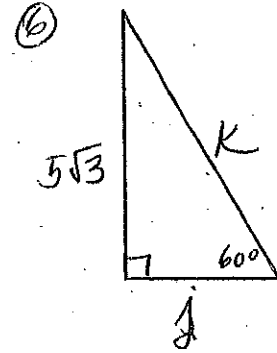
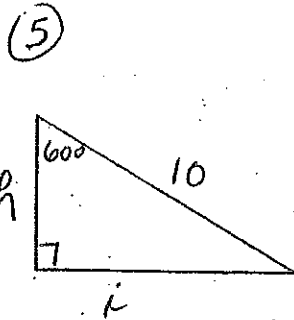
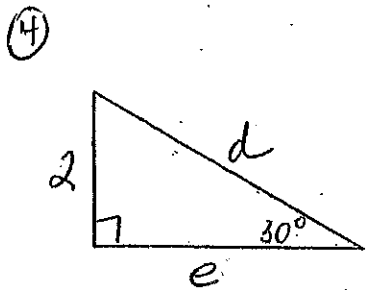
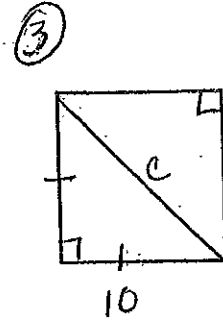
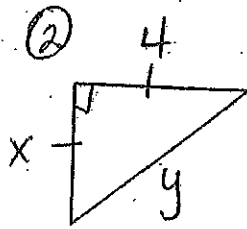
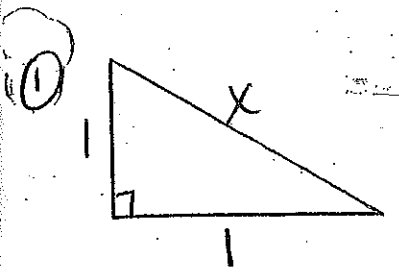
18. Does 23, 24, 25 form a right Δ ?

CP Geometry

8.2 Special Rt. A's



Name _____



DA = 15 feet find AB
DB
AC

BC
DC